

Specification sheet LX 994

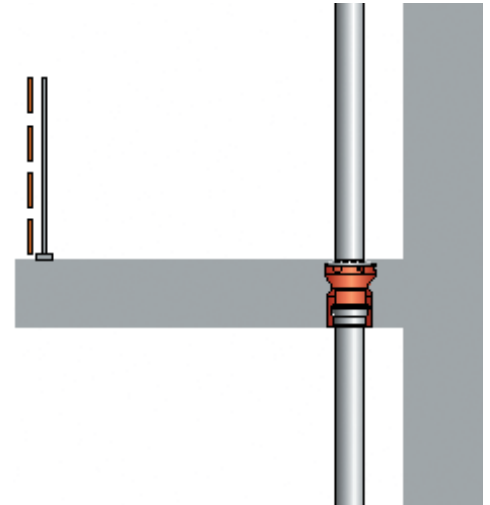
Balcony drainage system Series I, G, GF, GS, for balcony floors

Main drainage

Gravity flow

Silent

Discharge rate:	1,45 l/s
Water height:	35 mm
Roof penetration:	120 - 350 mm
Diameter:	DN 100
LX-Number:	LX 994
Weir height:	-
Drain:	ventilated
Downpipe:	ventilated
Downpipe height:	-
Drainage:	-
Flange form:	-



LX 994 Piece list

1 x Art.-No. choose drain on page two!

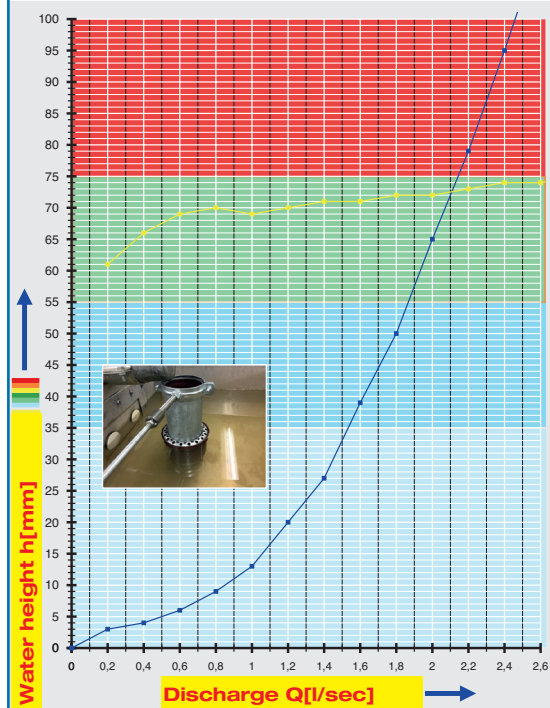
1 X Art.-No. 16193.100X, Strainer for balcony floors

1 x Art.-No. 01005.100X, LORO-X Pipe with one socket

1 x Art.-No. 00911.100X, LORO-X Sealing elements

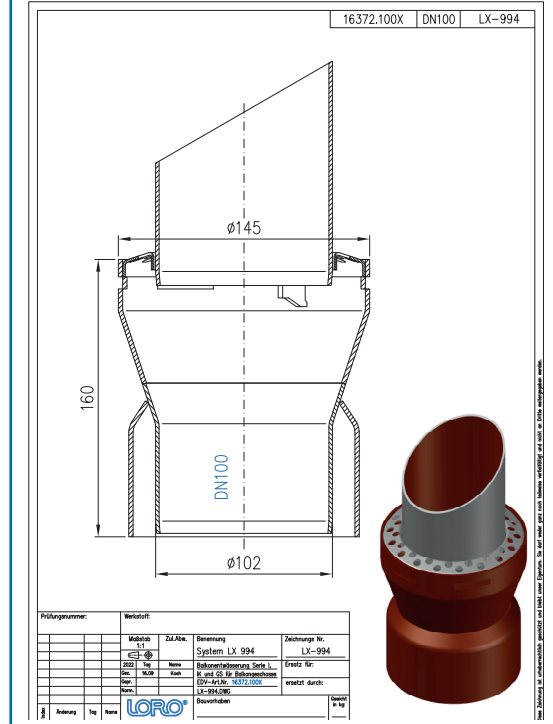
1 x Art.-No. 00986.000X, LORO-X Lubricant

hQ - Head-Discharge curve



Systempower

CAD



Systemshape

Water height	mm	5	10	15	20	25	30	35	40	45	50	55	60	65	70	75	80
Discharge	l/s	0,5	0,85	1,05	1,2	1,33	1,33	1,45	1,62	1,7	1,8	1,87	1,73	2,0	2,07	2,14	2,21
Silent																	

LORO-Balcony drainage, Series I, G, GF und GS

DN 100

with Strainer for balcony floors

LX994-12X

with dome,
Series I
Drain Art.-No.
for plate thickness from:

120 mm: No. 16370.100X
140 mm: No. 16371.100X
160 mm: No. 16372.100X
180 mm: No. 16373.100X
200 mm: No. 16374.100X
220 mm: No. 16376.100X



Accessories

Strainer

for balcony floors

quadratic

Art.-No. 16196.070X

round

Art.-No. 16193.070X



Strainer support

quadratic

Art.-Nr. 16190.070X

round

Art.-No. 16195.070X



Attachment

for height adjustment
30 mm - 60 mm

Art.-No. 16192.100X



with Strainer for upper balcony

LX994-12X

without supporting edge,
Series GS
Drain Art.-No.
for plate thickness from:

bis 350 mm: No. 16115.100X



LX994-12X

with supporting edge,
Series G
Drain Art.-No.
Length of downpipe:

250 mm: No. 16111.100X
3000 mm: No. 16131.100X



LX994-12X

with supporting edge,
Series GF

Drain Art.-No. 16110.100X



Accessories

Strainer

for balcony floors

quadratic

Art.-No. 16196.070X

round

Art.-No. 16193.070X



Strainer support

quadratic

Art.-Nr. 16190.070X

round

Art.-No. 16195.070X



Attachment

for height adjustment
30 mm - 60 mm

Art.-No. 16192.100X

